

Notes:

Register 4 and 10 summate to register 3

Not all of these values are available, depending on the meter type installed.

If you have used the scroll button to select a register, it will return to automatically scrolling through the registers after a period of inactivity.

A second set of registers can be accessed by pressing the “select” button for 3 seconds

Register	Value	Description
NAin	Instantaneous power consumed in kW	This is the power currently being consumed
Load	Instantaneous PV power output in kW	This is the power currently being generated by the PV system
SIG	Modem signal strength	Not relevant
Volt	Supply Voltage	This is the voltage of the supply at the meter, on Mk10's there will be three voltages
Curr	Current	Curr1 = load amps Curr2 = PV system amps For Mk10D's there will be 3 currents
PF	Power Factor	Power factor of the load.

Again note that not all of these values are available, depending on the meter type installed.

Pressing the ‘select’ button for 3 seconds returns the display to the standard display or it will automatically return after a period of inactivity.

Alice Solar City
Power and Water Corporation

Reading Your Smart Meter



If you have elected to go on to a Cost Reflective Tariff or installed a Photovoltaic system, a new smart meter would have been installed to replace your existing power meter. Refer to the Alice Solar City “Cost Reflective Fact sheet” for details of rates/times.

There are 3 types of meters installed, pictured at right, depending on requirements. The meters are similar to look at but you can identify the type by the model number shown on the front of the meter.

The meter types are:

Cost reflective tariff – single phase customers – typically domestic residences and some small businesses – these will be meters designated Mk7C.

Cost reflective tariff – three phase customers – some domestic residences and small businesses – these will be meters designated Mk10D.

Photovoltaic systems with cost reflective tariff – single phase customers – typically domestic residences and some small businesses – these will be meters designated Mk7A.

Photovoltaic systems with cost reflective tariff – three phase customers – some domestic residences and typically small businesses – these will be meters designated Mk10D with an Atlas Satellite meter mounted adjacent to it (not shown).

Each of the meters will scroll through the standard display registers listed in the following table at



Mk7C meter



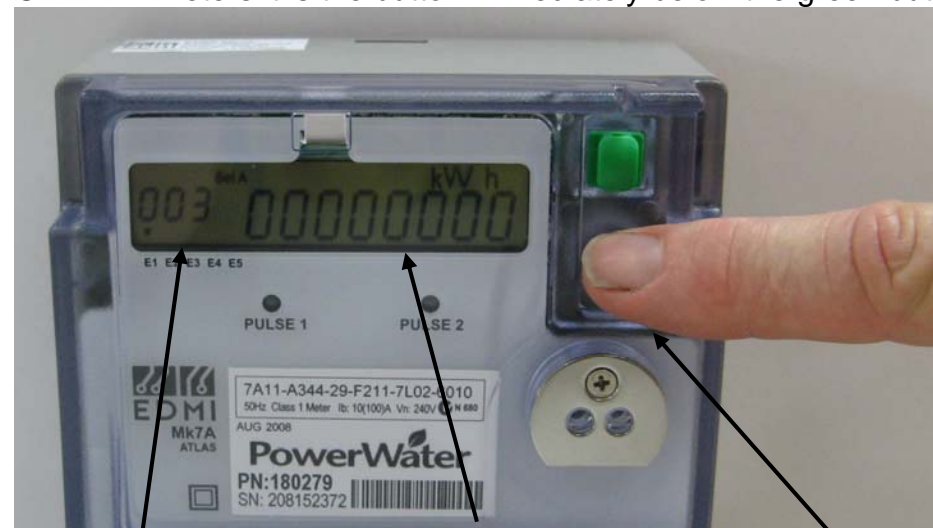
Mk7A meter



Mk10D meter

about 10 second intervals. If you press the “select” button you can advance the display to the register you require.

On Mk7A meters it is the button immediately below the green button.



Register indicator

Display value

Select Button

Register	Value	Description
Display Check	Nil	All the display elements are on
Tida	Time and date	Time format hours, minutes, seconds Date format day, month, year
003	Total kWhrs	Total energy consumed in kWhrs
004	Peak kWhrs	Total energy consumed during the peak period (9 am to 6 pm weekdays)
010	Off peak kWhrs	Total energy consumed during the off peak period.
023	PV generation	Total energy in kWhrs generated by the PV systems